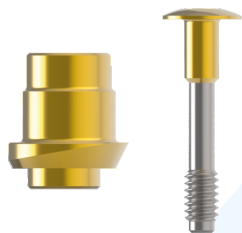
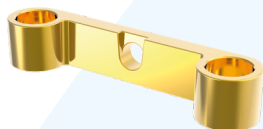


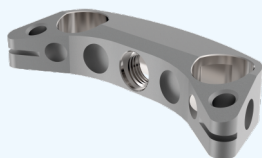
COMPONENTS TO BE USED IN CLINICAL AND LABORATORY PROCEDURES



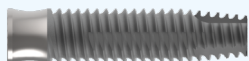
- 82-0001 Eccentric abutment; type 01
- 83-0001 Abutment screw; type 01
- 82-0010 Set, eccentric pillar + pillar screw



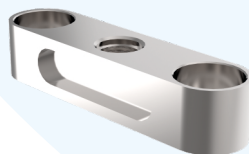
- 81-0000 Bar with casing and a MK1 Attachment
- 81-0001 Bar with casing
- 81-0010 Bar



- 81-1000 Bar casing
- 81-9000 Mk1 Attachment



- 14-4018 SOS two-piece implant 4,0 x 16 mm (+3mm)



- 81-1100 Bar casing replica
- 87-3015 Surgical template sleeve 1.5 mm (3 pcs)

SOS

SLIWOWSKI
OVERDENTURE
SYSTEM

PRODUCT PORTFOLIO

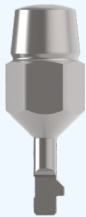
INSTRUMENTS



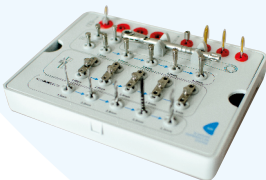
- 71-1540 Bone drill 1.5 x 40 mm
- 71-2042 Bone drill 2.0 x 42 mm
- 71-2842 Bone drill 2.8 x 42 mm
- 71-3042 Bone drill 3.0 x 42 mm
- 71-3342 Bone drill 3.3 x 42 mm
- 87-1115 Horizontal stabilization pin 1.5 mm
- 87-1015 Vertical stabilization pin 1.5 mm
- 87-1020 Vertical stabilization pin 2.0 mm
- 87-1028 Vertical stabilization pin 2.8 mm
- 87-1030 Vertical stabilization pin 3.0 mm
- 87-1033 Vertical stabilization pin 3.3 mm



- 87-0015 Double drill guide 1.5 mm
- 87-0020 Double drill guide 2.0 mm
- 87-0028 Double drill guide 2.8 mm
- 87-0030 Double drill guide 3.0 mm
- 87-0033 Double drill guide 3.3 mm



- 73-3000 Torque wrench 10-40 Ncm
- 73-3010 Internal hex driver 3.0 x 21 mm
- 75-3010 Internal hex driver 3.0 (contra-angle connection)
- 74-1020 External hex driver 1.25 x 24 mm
- 75-1020 External hex driver 1.25 (contra-angle connection)
- 74-2010 Implant hex driver 2.55
- 87-2010 Eccentric abutment positioning driver



- 87-2090 Surgical case

SOS

PRODUCT PORTFOLIO

SLIWOWSKI
OVERDENTURE
SYSTEM